

MURCHISON WK2 SNORKEL FITTING INSTRUCTIONS



MURCHISON WK2 SNORKEL FITTING INSTRUCTIONS

YOUR SNORKEL KIT CONTENTS

IN THE BOX

- 1 x Murchison WK2 Snorkel Body
- 1 x Murchison Snorkel Air Box Connector
- 1 x 3" Flexy Hose, 1.25m long
- 1 x Body Cutting Template
- 1 x Fitting kit

IN THE FITTING KIT

- 1 x Printed parts list
- 1 x Powder coat black window frame 'Z Bracket'
- 2 x 3" Hose Clamps
- 2 x M5x8 Hex Head Bolts
(attached to snorkel body)
- 2 x 10mm Washers
(attached to snorkel body)
- 5 x M5x16 Hex Head Bolts
- 5 x 15mm Washers
- 4 x Pop Rivets

TOOLS REQUIRED

- Various Drill Bits
- Cordless Drill
- Sawzel (Pneumatic Hacksaw)
- Angle Grinder with Cutting/Grinding/Clean-Up Disks
- Spanners
- Screw Drivers
- Pop Rivet Gun
- Silicon/Sicaflex
- Hand Files

MURCHISON WK2 SNORKEL FITTING INSTRUCTIONS

1. Remove the factory air box, and disassemble the factory intake.

Clean the intake surface with brake cleaner or equivalent solvent.



ABOVE: Factory air box has been removed

BELOW: Remove the stock air intake (smaller peice) this can be discarded



Important:

Fitting the new Murchison Air Box Connector is slightly different between 3.6 / 5.7 petrol models and the 3.0 CRD. Please read the next few pages carefully.

MURCHISON WK2 SNORKEL FITTING INSTRUCTIONS

2.

CRD 3.0L AIR BOX INSTALLATION

Insert the new air box adapter and secure it with waterproof silicone and the 2 pop rivets provided.

Ensure the new air box adapter is completely sealed to the factory air box by the silicone.

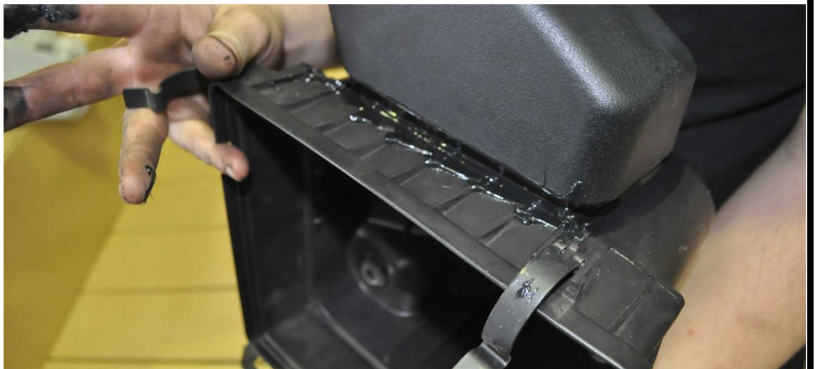
Finger wipe around bead (inside and out) for a neat seal.

We recommend leaving the air-box for about 1 - 2 hours to cure before reinstalling into the vehicle.



ABOVE: Make sure you use a decent amount of silicone.

BELOW: Finger wipe silicone around the seal inside and out.



MURCHISON WK2 SNORKEL FITTING INSTRUCTIONS

3.6 OR 5.7 AIR BOX INSTALLATION

For 3.6 and 5.7 models you will need to perform a quick operation to trim out the inlet so you can fit in the supplied connector.

Simply trim the upper lip of the air-box to the point that the connector will fit snug.

Sikaflex the connector to the box and drill 2 holes in the bottom leading edge and insert 2 pop rivets for strength.

Important: Ensure the new air box adapter is completely sealed to the factory air box by the silicone, finger wipe around bead (inside and out) for a neat seal.



ABOVE: An upper lip on the air box stops the connector from sitting flush
BELOW: The connector sitting flush to the air box



ABOVE: pop rivets joining the air box and connector

MURCHISON WK2 SNORKEL FITTING INSTRUCTIONS

3.

Jack up the front, left hand side of the vehicle (be safe!) and remove wheel and inner wheel arch splash guard.



ABOVE: Wheel and innder guard removed
BELOW: The wiring loom to be moved

4.

Identify and relocate wire loom to prevent damage as per the pictures



BELOW: The wiring loom to be moved secured to the support



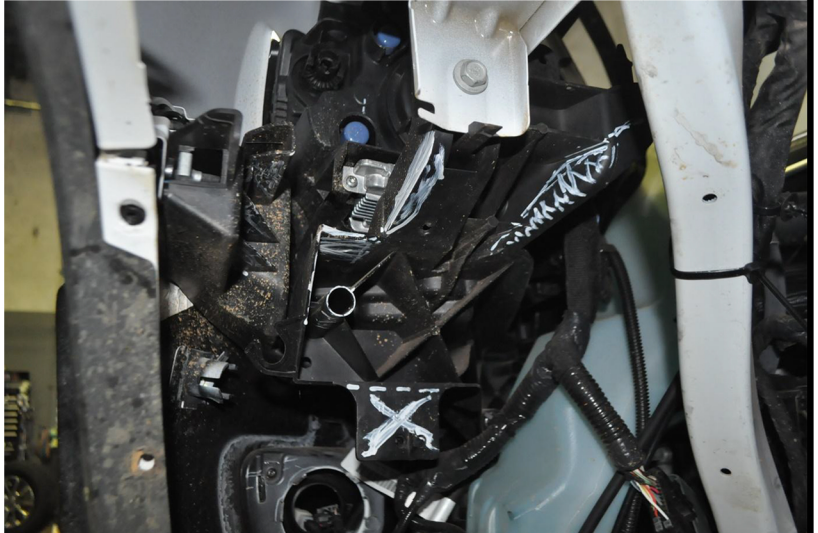
MURCHISON WK2 SNORKEL FITTING INSTRUCTIONS

5.

Using a grinding disk, trim the plastic support structure behind the headlight as shown in the pictures.

Ensure the structure is trimmed a degree where the hose can run from the air box to the wheel arch without bulging the splash guard, see photos.

Make sure all hard plastic edges are rounded or chamfered so there will be no risk of the hose being punctured.



ABOVE: Before: The sections to be removed

BELOW: After: The area cleared and room made for the snorkel hose.



ABOVE: Note the air box adaptor is visible, and there is plenty of room for the hose.

MURCHISON WK2 SNORKEL FITTING INSTRUCTIONS

6.

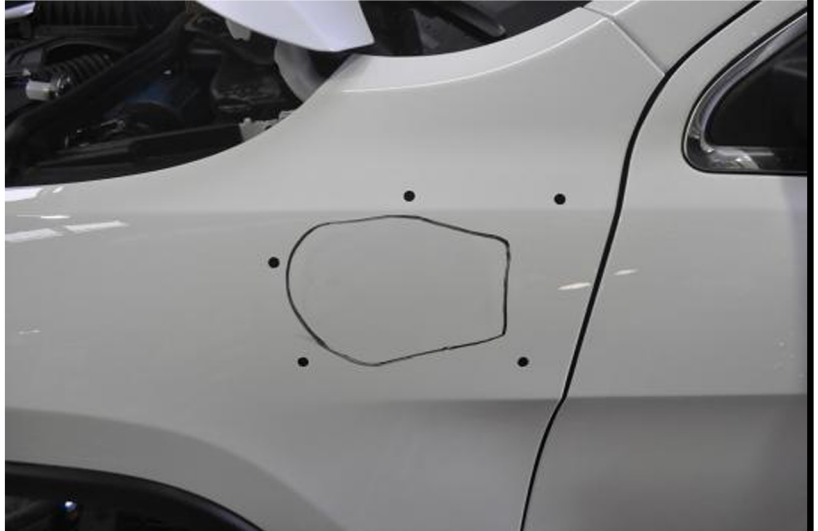
Reinstall the modified air box in the factory location.

7.

Unpack the body cutting template and secure it against the side of the car, **ensure the body lines of the car match the body lines of the template.**

(See diagram on the next page.)

The next page will explain the template. Please carefully read over it before proceeding.



ABOVE: Before: The 5 holes to be drilled. Note there is no lower hole marked, as this model does not have a side indicator

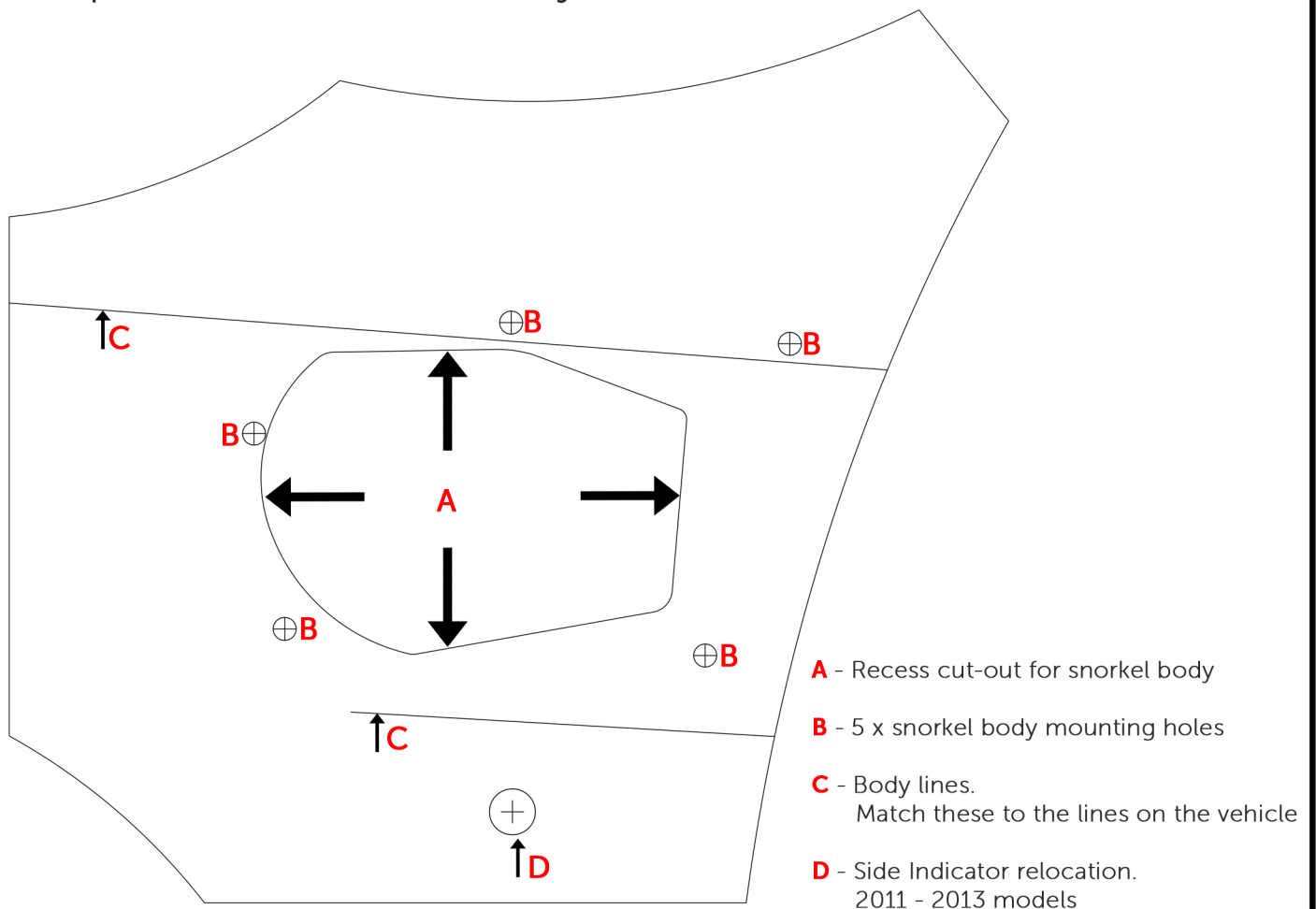
MURCHISON WK2 SNORKEL FITTING INSTRUCTIONS

8.

At this stage please note the year model of the WK2 Jeep that you are working on.

Most 2011 - 2013 WK2's will have a side indicator on the body panel whereas the 2014+ models do not.

Important: If the WK2 Jeep does not have a side indicator marker on the body panel, disregard the lower hole (D) on the template below. This is only used to relocate the side indicator.



MURCHISON WK2 SNORKEL FITTING INSTRUCTIONS

9.

Begin with drilling the 5 smaller holes which are the mounting holes for the snorkel.

10.

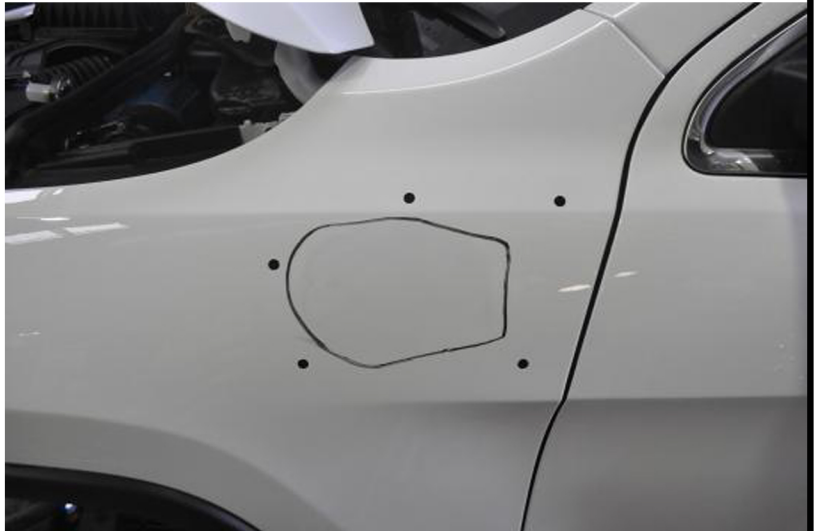
Using a sawzels type cutter and an angle grinder, cut out the middle shape which is the recess for the hose adapter attached to the snorkel.

Take your time.

Ensure all precautions are taken for a neat fitment.

Once the cut out is done, ensure all edges are deburred with a file and then brush touched with paint to prevent corrosion.

Please note the next step.



ABOVE: Before: Holes marked for drilling and the cut-out marked out
BELOW: After: Holes drilled and the cut-out completed



MURCHISON WK2 SNORKEL FITTING INSTRUCTIONS

11.

Important:

This next step is for 2011 - 2013 vehicles with the side indicators only. If this does not apply to your WK2, skip this step.

Drill the lower hole for the indicator relocation only if required

Trim the factory clips off of the back of the side indicator marker as shown in the pictures (right) and then fix to the body using silicone.

You can use a flapper disk to clean up the plastic burs.

Tape should be used to fix the indicator in position whilst the silicone is setting.



ABOVE: The side indicator removed with tabs trimmed
BELOW: Tape holding the side indicator while the silicon sets



MURCHISON WK2 SNORKEL FITTING INSTRUCTIONS

12.

Rub silicone into the inside ribs of the flexy hose, this ensures a good seal when the hose is clamped with the hose clamps.

Attach the flexy hose to the snorkel with one of the hose clamps provided and thread the hose through the cut out shape in the body.



ABOVE: Silicone on the inside of the flexy hose

BELOW: The hose attached and clamped to the snorkel body



MURCHISON WK2 SNORKEL FITTING INSTRUCTIONS

13.

Position the hose along the wheel arch and zip tie into position. Then attach the hose to the modified air box with the other hose clamp provided.

As with the snorkel body end, rub silicone into the inside ribs of the flexy hose.



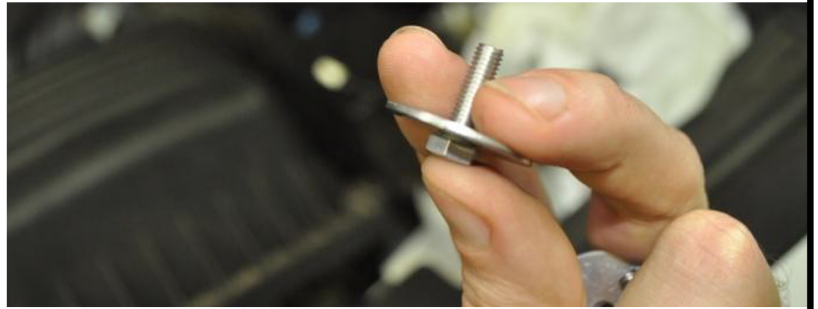
ABOVE: The flexy hose zip tied in the wheel arch
BELOW: Don't forget to silicon the air box end of the hose



MURCHISON WK2 SNORKEL FITTING INSTRUCTIONS

14.

Using the five M5x16 hex head bolts and the 15mm washers, secure the snorkel to the body of the car.



MURCHISON WK2 SNORKEL FITTING INSTRUCTIONS

15.

Mark and drill the window frame to suit the position of the holes in the bracket, and the secure with two pop rivets.

16.

Re-install the factory splash guard into the wheel arch and replace the wheel.

17.

For the final step, clean up the work area and vehicle. Polish off finger prints or marks off the body panels and rub down the snorkel with WD-40 to give the snorkel the "brand new" look.